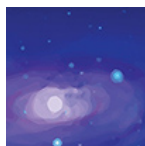


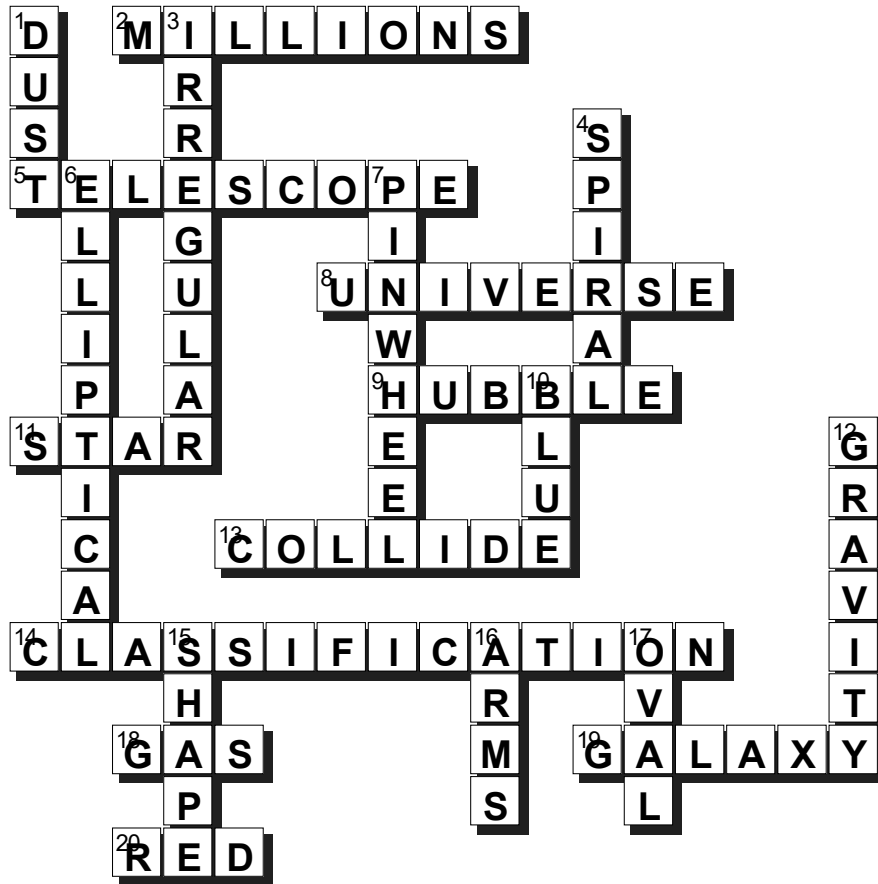
[Across]

[Down]

- | | |
|---|---|
| <p>2. How many galaxies are estimated to exist?</p> <p>5. What astronomers use to look at galaxies.</p> <p>8. All of space.</p> <p>9. The last name of the person who made the galaxy classifications.</p> <p>11. A ball of hot material, like the Sun.</p> <p>13. What two spiral galaxies do to become an irregular galaxy.</p> <p>14. The process of grouping galaxies together.</p> <p>18. A type of material in the arms of spiral galaxies.</p> <p>19. A group of stars held together by gravity.</p> <p>20. The color of old stars and galaxies.</p> | <p>1. A type of material that creates dark spots in the arms of spiral galaxies.</p> <p>3. Name for galaxies that aren't clearly elliptical or spiral.</p> <p>4. Name for galaxies that have a pinwheel shape.</p> <p>6. Name for galaxies that have a shape like a stretched circle.</p> <p>7. The shape of spiral galaxies.</p> <p>10. The color of young stars and galaxies.</p> <p>12. The force that holds galaxies together.</p> <p>15. The trait we use to group galaxies together.</p> <p>16. Where the stars, gas, and dust are in spiral galaxies.</p> <p>17. The shape of elliptical galaxies.</p> |
|---|---|



Try our crossword puzzle based on one of our web articles. You can learn more about this topic when you read the article *Gigantic Groups of Galaxies* at *Ask An Earth and Space Scientist*: <https://askanearthspacescientist.asu.edu/explore/galaxies>



[Across]

SOLUTION

[Down]

- 2. Millions
- 5. Telescope
- 8. Universe
- 9. Hubble
- 11. Star
- 13. Collide
- 14. Classification
- 18. Gas
- 19. Galaxy
- 20. Red



- 1. Dust
- 3. Irregular
- 4. Spiral
- 6. Elliptical
- 7. Pinwheel
- 10. Blue
- 12. Gravity
- 15. Shape
- 16. Arms
- 17. Oval

The solution above will let you see how well you did with the puzzle.

Try some of the other puzzles at *Ask An Earth and Space Scientist*:

<https://askanearthspacescientist.asu.edu/activities/puzzles>

